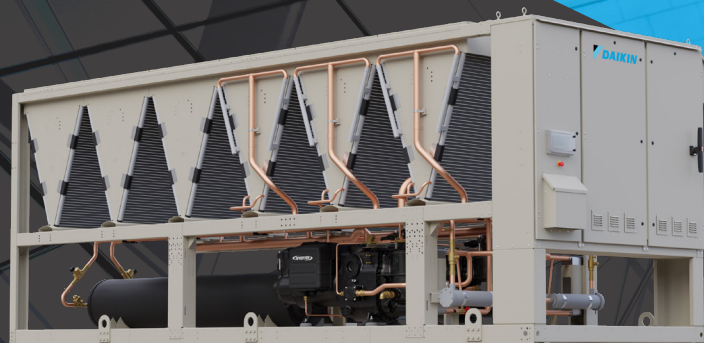
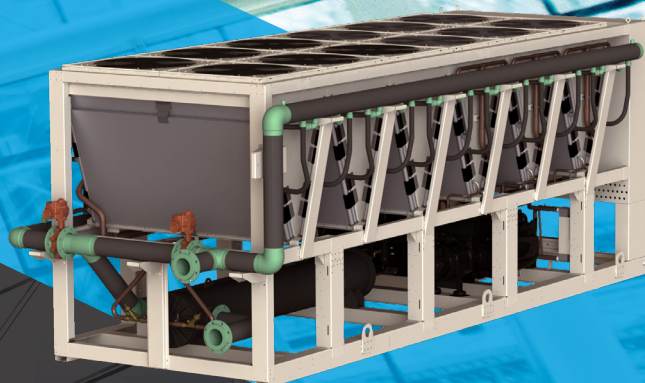
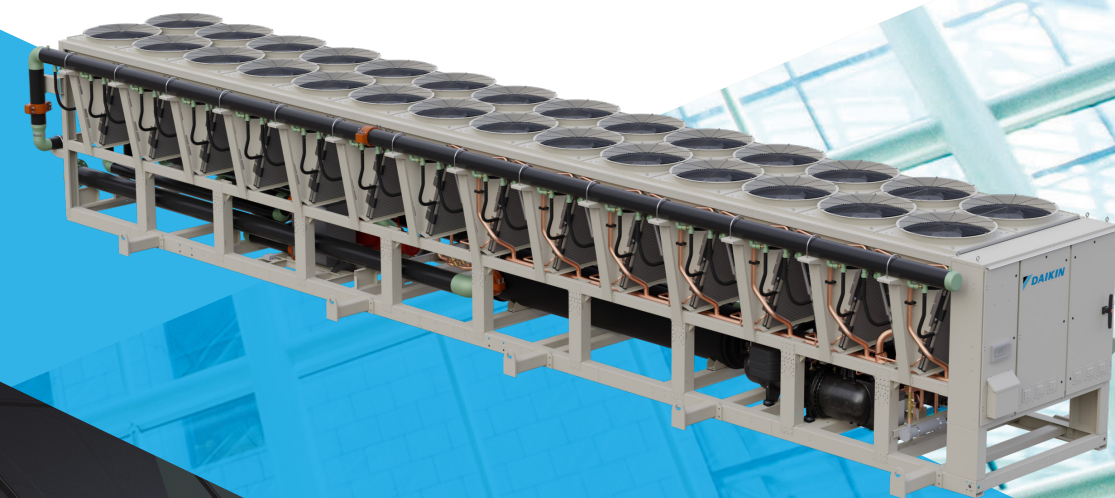


# PATHFINDER<sup>®</sup> AWV

AIR-COOLED SCREW CHILLER WITH FREE COOLING



- MODELS AWV-B, AWV-C
- 100 TO 565 TONS COOLING (350 TO 1985 KW)
- LOW-GWP R-513A OR R-515B REFRIGERANT

# MEET YOUR MATCH

## FOR EFFICIENCY, SOUND AND SIZE







**Pathfinder** chillers are an ideal solution for meeting low-GWP refrigerant requirements, offering compatibility with R-513A or R-515B, environmentally responsible, ASHRAE A1- classified refrigerants. Designed to align with evolving regulations and sustainability goals, Pathfinder provides high efficiency without compromising performance. Its flexible design supports compliance with current and future refrigerant codes, making it a smart, future-ready choice for eco-conscious cooling.

### CERTIFICATIONS



### PERFORMANCE

-  Heating and cooling
-  100 - 565 tons
-  R-513A/R-515B Refrigerant
-  Up to 60% more efficient

### FEATURES

- > Variable Vume Ratio® (VVR) technology
- > Integrated free cooling economizer
- > RapidRestore® and Fast Loading technology
- > 100% fully configurable

### LINKS:


[Video](#)

[Installation & Operation Manual](#)

[Engineering Data](#)

## TABLE OF CONTENTS

Overview .....	2
Advantages/Technologies .....	4
Options/Accessories.....	6
Vertical Markets/Applications .....	10
Rooftop System Solutions.....	11

Dakin360 Maintain & Repair.....	12
Dakin360 Parts & Supplies .....	13
Dakin360 Rental Solutions.....	14
Complete HVAC System Solutions .....	15



## Environmentally Friendly

**Pathfinder** chillers are an environmentally friendly air cooled chiller solution, combining high efficiency, low-GWP refrigerant compatibility, and advanced technologies like variable speed drives and VVR compression. These features reduce energy consumption, lower greenhouse gas emissions, and support sustainable building practices. Ideal for vertical markets such as healthcare, education, commercial real estate, and manufacturing, Pathfinder delivers reliable performance while helping facilities meet environmental and regulatory goals.



## Low GWP Refrigerant

**Pathfinder** chillers are built to meet today's low-GWP refrigerant needs, offering compatibility with R-513A and R-515B, ASHRAE A1-classified options that support responsible cooling. Engineered to align with evolving regulations and sustainability targets, Pathfinder delivers high efficiency without sacrificing performance. Its adaptable design ensures compliance with current and future refrigerant standards, making it a smart, future-ready choice for environmentally focused operations.

## Industry-Leading Efficiency

With an IPLV rating that exceeds 22 EER, Pathfinder chillers exceeds ASHRAE 90.1 Path A baseline efficiency levels by more than 60%, and beats all other air-cooled screw chillers on the market when it comes to efficiency.

Featuring Daikin's proprietary Variable Volume Ratio (VVR<sup>®</sup>) compressor technology, Pathfinder senses the precise amount of lift needed and adjusts the compression ratio on the fly to deliver optimal efficiency, regardless of ambient temperature or time of day. Combined with fully-variable-speed ECM fan motors, the Pathfinder delivers top efficiency and minimizes cost-of-ownership, as an ever-growing cohort of Pathfinder owners can attest.

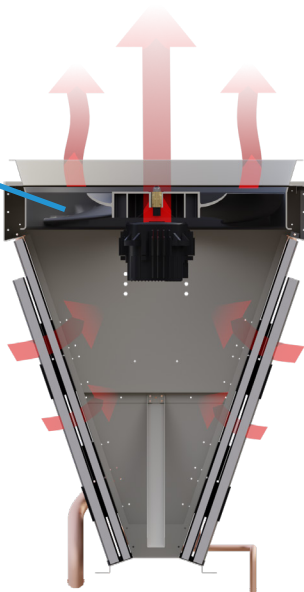


## ENHANCED FAN DESIGN

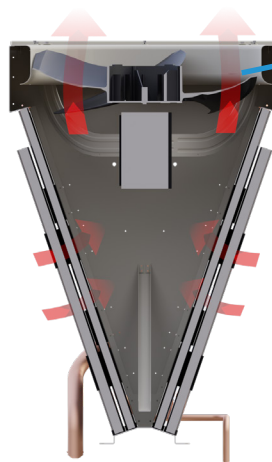
Available as an option for select unit sizes, Daikin's next-generation enhanced condenser fan deck delivers **20% more airflow** than the standard design. This streamlined, shrouded design improves efficiency and sets a new benchmark for condenser performance.



Optional Enhanced Fan Design



Standard Fan



## IN-STOCK CHILLERS

### Air-cooled Chillers

#### Trailblazer® Scroll Compressor Chillers

- > AGZ 30 - 230 tons
- > Quiet, efficient, reliable

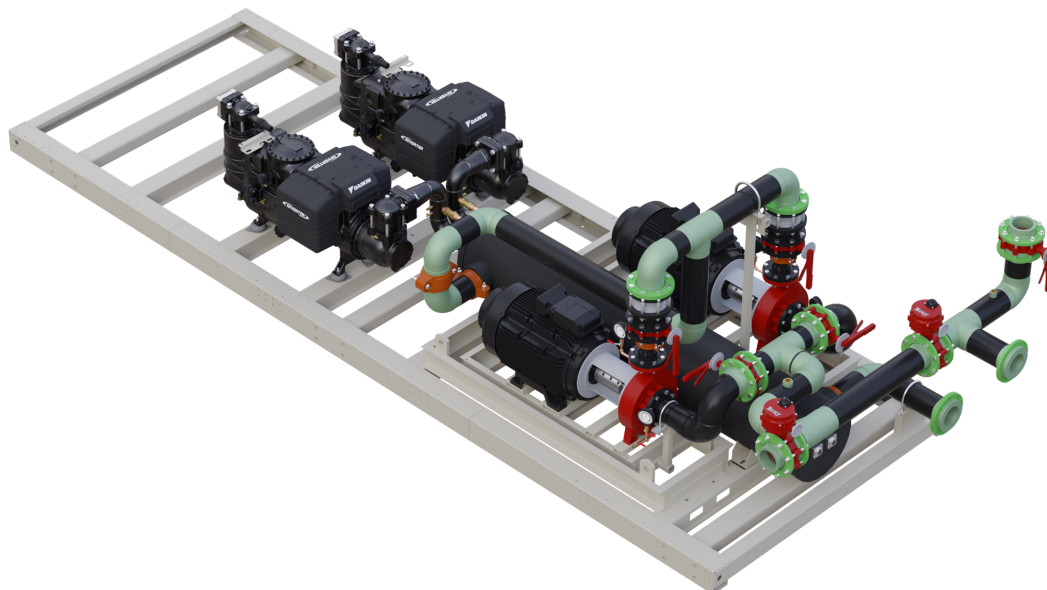


Daikin's in-stock Pathfinder air-cooled chillers offer fast availability without compromising on performance—delivering high efficiency, reliable operation, and flexible configurations to meet a wide range of cooling needs. For smaller applications or where footprint is a concern, the compact Trailblazer chiller is also available in select models, ready to ship.



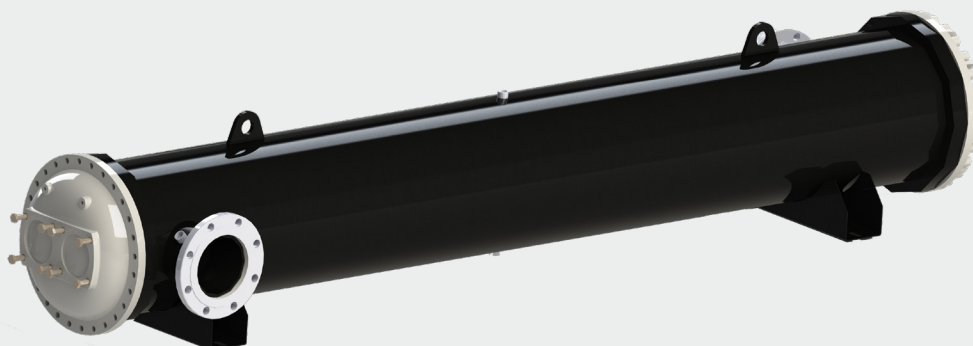
## OPTIONAL PUMP PACKAGE

An optional integrated pump package, available with single or dual pumps on both standard and free-cooling models, enhances Pathfinder chillers to 100% configurability by consolidating key components into one chiller-powered unit, streamlining installation, reducing project complexity, and supporting faster, more efficient commissioning. This all-in-one design eliminates the need to size, source, and install separate pumps, reducing project complexity, accelerating timelines, and ensuring seamless system compatibility.



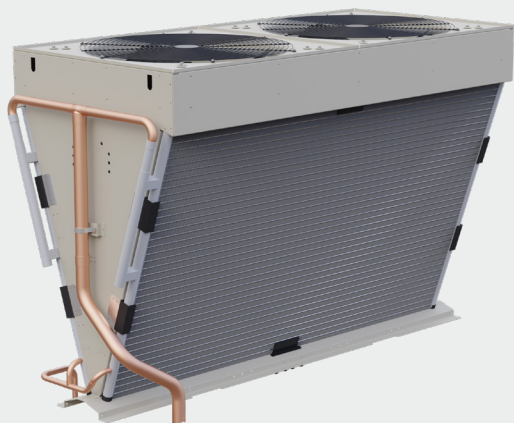
## OPTIONAL REMOTE EVAPORATOR

An optional remote evaporator configuration provides increased design and installation flexibility. This option allows the evaporator to be located separately from the main chiller unit, making it well-suited for applications with space constraints or where indoor placement is preferred. Separating the evaporator can help reduce the risk of freezing in colder climates and improve accessibility for maintenance, while maintaining the high efficiency and performance.



## MICROCHANNEL HEAT EXCHANGERS

Our epoxy-coated microchannel heat exchangers deliver industry-leading corrosion resistance and proven reliability, even in the harshest environments. With over 10,000 hours of ASTM B117-90 salt-spray testing, these coils outperform traditional designs and help reduce costly corrosion-related downtime. Ideal for coastal and industrial applications, the all-aluminum construction resists galvanic corrosion and supports efficient, long-lasting performance. Available on select Daikin chillers and rooftop systems, microchannel technology offers enhanced heat transfer and a smaller environmental footprint.



### Benefits of Microchannel

**Corrosion:** Promote better IAQ by removing building and occupancy related contaminants.

**Coastal applications:** Epoxy-coated microchannel coils provide excellent protection from salt-laden environments.

**Reliable performance:** Proven design offers continuous performance for a wide range of applications.

**Improved heat transfer:** Microchannel technology provides up to 30 percent better heat transfer than fin-and-tube models.

## INTEGRATED CLOSED-LOOP FREE-COOLING WATER-SIDE ECONOMIZER



The integrated water-side economizer (free cooling system) combines fluid-to-air heat exchanger coils in series with the airflow of the primary chiller condenser coils to dissipate heat outdoors without vapor compression cooling. This is possible when outdoor air is colder than cooling fluid requirements. The use of free cooling in various applications harnesses outdoor air for natural cooling, reducing compressor work and enhancing chiller efficiency.

Additionally, addressing the demand for glycol-free solutions in data centers, hospitals, indoor agriculture, and manufacturing facilities, the AWV with closed-loop free-cooling eliminates the need for glycol for freeze prevention in colder climates and minimizes contamination risk beyond the unit with an intermediate heat exchanger.





**1 VARIABLE VOLUME RATIO (VVR) SCREW COMPRESSORS:** Configurable speed and size options allow Pathfinder to dial in the exact capacity required as design conditions vary.

**2 EVAPORATOR:** Varying length, tube quantity, and number of baffles allow Pathfinder to yield different efficiency, pressure drop, and minimum flow rate characteristics.

**3 HIGH EFFICIENCY FAN MOTOR:** Optional Fan Motor: Options for fixed speed and fully variable speed EC fan motors increase efficiency and sound levels with EC motors yielding much quieter operation as ambient temperatures fall.

**4 COMPOSITE FAN:** Inherently quiet design won't degrade or corrode over the lifetime of the unit.

**5 OPTIONAL REDUCED SOUND MODE:** Reduces fan speed for quieter day/night operation. Enable/disable via time schedule to optimize for best performance or lowest sound.

**6 MODULAR CONDENSER DESIGN:** Allows variation of the footprint and efficiency of the unit independent of the capacity required.

**7 ELECTRICAL DESIGN:** Tailor design amperage to your specific design conditions, reducing installation and retrofit costs.

**8 OPTIONAL PUMP PACKAGE:** Single or dual pumps on both packaged and free-cooling models offer convenience and speed, eliminating the need to size, source and install the system pumps separately.

**9 OPTIONAL REMOTE EVAPORATOR:** The optional remote evaporator for Daikin's Pathfinder chiller provides greater installation flexibility, allowing the evaporator to be located separately from the chiller unit. This is ideal for space-constrained applications or when indoor placement of the evaporator is preferred for freeze protection or maintenance access.





## DATA CENTERS

An ideal cooling solution for data centers, this system delivers reliable performance and energy efficiency to meet demanding operational needs. The integrated closed-loop free-cooling system enables natural cooling without glycol, reducing contamination risks and simplifying maintenance. This feature supports sustainability while ensuring consistent, high-performance operation.



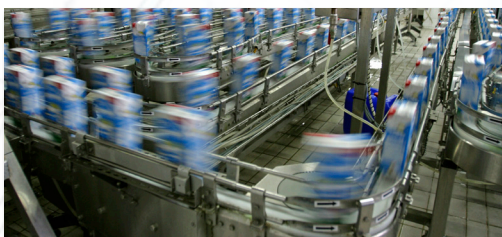
## INDOOR AGRICULTURE

A smart choice for indoor agriculture, this solution delivers efficient, reliable cooling to maintain consistent growing conditions. The integrated closed-loop free-cooling system eliminates the need for glycol, reducing contamination risk and supporting a cleaner, more controlled environment. It helps optimize plant health while enhancing sustainability in agricultural operations.



## HEALTHCARE

Ideal for healthcare environments, this solution provides dependable, energy-efficient cooling to support critical operations. The integrated closed-loop free-cooling system eliminates the need for glycol, reducing contamination risks and enhancing overall system safety. It's a reliable and sustainable option for maintaining patient comfort and protecting sensitive medical equipment.



## MANUFACTURING

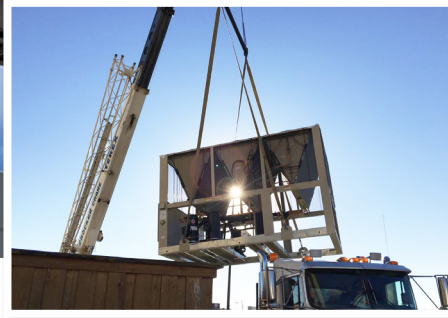
Well-suited for manufacturing environments, this solution provides efficient, reliable cooling to support continuous operation and process stability. The integrated closed-loop free-cooling system eliminates the need for glycol, helping to reduce contamination risks and maintenance complexity. It promotes sustainable performance while meeting the rigorous demands of industrial applications.



# AIR-COOLED CHILLERS

## COMPLETE, ULTIMATE FLEXIBILITY

Chillers make cold water or water/glycol fluid mixture to cool buildings or processes. An air cooled chiller rejects heat absorbed from the building or process directly to the outdoor air using refrigerant to air coils and fans that blow outdoor air directly over those coils.



## APPLICATIONS

- ▶ HEALTHCARE
- ▶ OFFICE BUILDINGS
- ▶ HIGHER EDUCATION
- ▶ HOSPITALITY
- ▶ DATA CENTERS

### NAME/MODEL:

#### TRAILBLAZER®

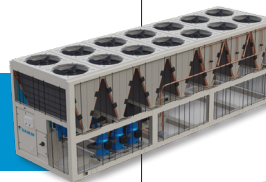
EWYQ/T Heat Pump  
Scroll compressor



25 tons

#### TRAILBLAZER®

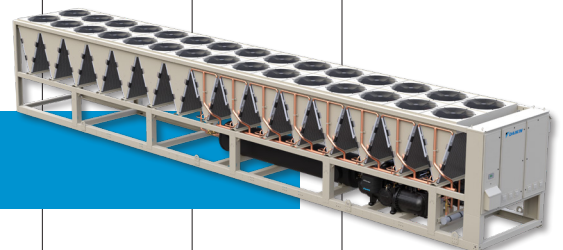
AGZ  
Scroll compressor



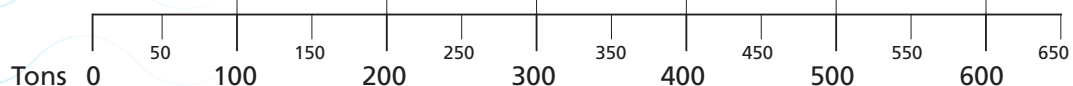
30-230 tons

#### PATHFINDER®

AWV  
Screw compressor



100-565 tons



# MAINTAIN AND REPAIR

PROTECTIVE MAINTENANCE SERVICES

[LEARN MORE](#)

## REPAIR SERVICES

Breakdowns happen and when your equipment has an issue, time is of the essence. Call us at 800-432-1342 to get Daikin Service professionals dispatched quickly and minimize downtime. Your local team is backed by nearly 100 years of experience to alleviate undue stress in your operations.

- **24/7 Emergency Service**
- **System Repairs & Assessments**  
(Ancillary Equipment: Boilers, Cooling Towers)
- **Equipment Diagnostics**
- **Technical Troubleshooting**
- **Building Automation & Controls**
- **OEM & Generic Parts/Supply**
- **All Equipment Types & Brands**

## PREDICTIVE SERVICES

Predictive maintenance services anticipate failures before they happen to mitigate the risk of catastrophic failure. For those who have in-house maintenance capabilities, Daikin Service can also guide your team and be on standby for more complex technical needs with predictive maintenance.

- **Oil & Refrigerant Analysis**
- **Vibration Analysis**
- **System Diagnostics**
- **Eddy Current Testing**
- **Infrared Analysis**
- **Combustion Analysis**
- **IAQ Assessments**
- **Laser Alignments**
- **Bearing Analysis**

## PLANNED MAINTENANCE SERVICES

Daikin Applied's service technicians can perform all of the vital maintenance your system needs to ensure your equipment is running at peak efficiency. From proper cleaning to software upgrades and necessary maintenance, our techs will maximize your system to help extend the life of your equipment.

- **Regularly Scheduled Maintenance**
- **Seasonal Startup & Shutdown**
- **System Diagnostics**
- **Condenser Cleaning**
- **Air Filters**
- **On-site System Inspections**

## PROACTIVE SERVICES

With proactive maintenance services, we support you with proven experts, offerings and processes to ensure customers get the help they need from a trusted advisor.

- **Building Operations Review**
- **Contingency Planning**







# RENTAL SOLUTIONS

KEEPING YOU UP AND RUNNING

[LEARN MORE](#)



## CHILLERS | AIR CONDITIONERS | DEHUMIDIFIERS | HEATING | POWER

### EMERGENCY RENTALS

When your equipment fails, limiting downtime is mission critical. Daikin Applied provides quick delivery and installation of reliable rental products to help you weather the outage. We're here to help get you back up and running, and can provide a turnkey solution.

- Industry-leading efficiency and proven technology
- 24-hour turnaround on available inventory
- 8-hour average set up with on-site experts
- Comprehensive package, including pumps, flexible water piping connection and electrical hookups

### EQUIPMENT FOR PLANNED SITUATIONS

Forming a contingency plan in the event of an outage can help you quickly get operations back to normal and limit financial loss, and help you breathe easier when the unexpected happens. Selecting the right-sized equipment is just one part of the process. The best contingency plans start by assessing and understanding your financial risk, and then using this information to drive the rest of your plan. Our Rental Solutions experts can specify the supplemental cooling system required to support any situation you're experiencing.

- System maintenance
- Building expansion
- Server room heat generation
- Seasonal/staff heat load swings
- Contingency plans

### SUPPLEMENTAL CAPACITY

When the demand of your facility or process exceeds your current system's capacity because of record-high temperatures or changes to cooling requirements, Daikin temporary rentals can be used to increase your heating or cooling output. By eliminating the need to purchase additional equipment that might be only used part of the year, you save on capital expenditures.

### STANDBY

Standby for critical applications and processes is another efficient use for temporary rental equipment. A temporary system is sometimes used to back up manufacturing and chemical processes, or when a hospital's required system redundancy has been reduced.



# COMPLETE HVAC SYSTEM SOLUTIONS

SELF-CONTAINED | ROOFTOPS | COILS | CONDENSING UNITS  
AIR HANDLERS | WATER-COOLED CHILLERS | AIR-COOLED CHILLERS  
MODULAR CENTRAL PLANTS | SITELINE BUILDING CONTROLS  
UNIT HEATERS | FAN COILS | AIR PURIFIERS | WATER SOURCE HEAT PUMPS  
VARIABLE AIR VOLUME UNITS | UNIT VENTILATORS



13600 INDUSTRIAL PARK BLVD. | MINNEAPOLIS, MN 55441  
1-800-432-1342 | 763-553-5330

LEARN MORE AT  
**[DAIKINAPPLIED.COM](http://DAIKINAPPLIED.COM)**

